



A SANCTUARY AND SOUL FOR THE CENTRE OF AUCKLAND

St Matthew-in-the-City and the Auckland City Mission are the key partners for this ideas competition on a prime city block between Hobson & Federal Streets in central Auckland.

The brief is to provide innovative ideas in a diverse inner city neighbourhood for health, social and spiritual services, welcoming public spaces, affordable housing for families seeking change, early childhood facilities, flexible church and community spaces and income generating commercial activities.

We assembled a diverse team including representatives with a detailed understanding of social behavior, the needs of inner city communities and the marginalized, and with development and construction expertise.

Our concept for the site was informed by nomadic and vernacular traditions and the notion of travelling light in shifting patterns like invisible pathways tracing through the site. Our vision is to recapture a connection with the harbour, the horizon and the hilltop.



We are pleased to announce the addition of Luke Braakhuis to our team here at HDT. Luke brings with him an impressive set of CAD management and draughting skills along with a sound construction knowledge developed over the previous seven years with an international multi-discipline consultancy. His initiative and measured approach to resolving details, while maintaining the design intent, has meant he has become an integral part of the team leading the documentation for the new Hydrotherapy Facility at the Wellington Regional Aquatic Centre. Welcome aboard Luke.

PO Box 6435
24 Blair Street
Wellington
New Zealand
T 04 385 2621
F 04 385 2629
E architects@hdt.co.nz



HUNT . DAVIES . TENNENT
ARCHITECTS



NETWORK OCTOBER 2006



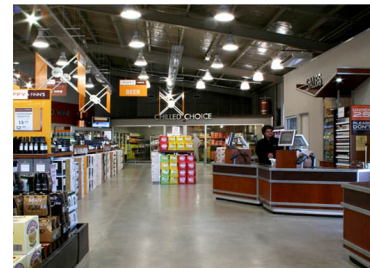
HUNT . DAVIES . TENNENT



DUFFY & FINN LIQUOR STORE

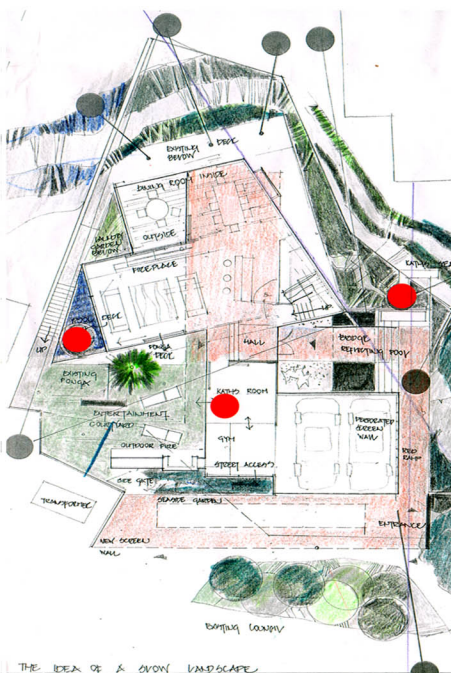
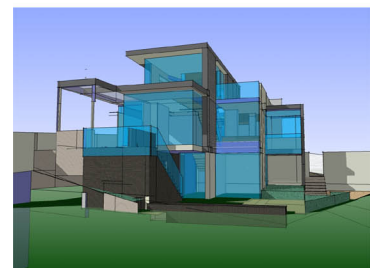
Duffy & Finn liquor store in Porirua opened in August 2006. As the prototype for a new chain of stores, we worked with Foodstuffs developing the overall look of the store from concept right through to working drawings and construction.

Within the store, industrial materials are left in their raw such as bright aluminium, galvanised steel and polished concrete contrasting with warm timber. The selection of materials is consistent and rigorous, from the built elements to the retail joinery resulting in a look that is consistent with the brand. The existing 'shed-like' roof structure has been left exposed with dropped ceilings, lighting channels and signage boxes suspended at a lower level, so that the space feels both large and intimate. A perfect environment for taking time to peruse the shelves for that special drop!



POONAN HOUSE

This three-storey home occupies a commanding hill site overlooking Lambton Harbour. The design balances the requirements for shelter in this extremely exposed location with the desire to enjoy panoramic vistas and sun. Careful detailing that treats commercial cladding materials in a domestic design manner provides a contemporary interpretation of the client's requirements. This is a large home that conveys a scale in keeping with it's residential setting. In addition to the open plan kitchen, 3 living areas and a double garage there are 4 bedrooms, 4 bathrooms, a home cinema and sauna organized around a 3 storey central stairway. Extensive building automation systems are incorporated into the home to customize the control of features such as security, sound systems, window blinds, heating and ventilation. Construction is due to commence shortly.



SEATOUN HOUSE

The concept for this private house in Seatoun is rooted in the existing steep topography and in the idea of borrowing landscape from beyond to increase the apparent size of the house on its special site.

The existing house sits on the site gently and allows for various ways of moving around and through the site. This was a quality that we valued and have tried to retain in the new design.

Use is made of an intricate web of spaces and courtyards to provide a range of places, some intimate, some expansive. As one moves through the house the landscape is initially concealed, then revealed slowly to culminate in the spectacular panoramic seascape.

