



DUFFY AND FINNS HASTINGS

Work is continuing apace on construction at the new Duffy & Finn store in Hastings. Following on from the prototype store opened in Porirua last year the Duffy & Finn concept is due to be launched in the Hawkes Bay, on time, on the 7th of December.



PO Box 6435
24 Blair Street
Wellington
New Zealand
T 04 385 2621
F 04 385 2629
E architects@hdt.co.nz



www.hdt.co.nz

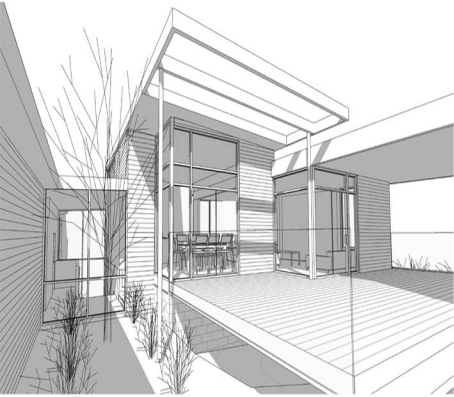
We now have a brand new website up and running! Check it out!



NETWORK NOVEMBER 2007



HUNT . DAVIES . TENNENT LTD



NEW HOUSE, SEAGROVE SUBDIVISION

This design for a new house in Seagrove Conservation Estate, Newlands, is governed by its formidable surroundings: on the one hand, panoramic views over Wellington harbour and the surrounding ridges and valleys; on the other, the high exposure to the elements that comes from such a prominent site. The house is treated as a series of strong enclosing forms which frame views out towards the harbour and the city whilst providing privacy and protection from neighbours and the wind. The ends of these forms create sheltered exterior spaces, which flow naturally into the living areas and bedrooms and are centred around a courtyard garden.



RAILWAY METRO NEW WORLD

We are pleased to announce that the Railway New World Metro store has recently won both its Division (Gourmet Foods, Grocery and Convenience Stores) and the overall Group (Nourishment) at the 2007 New Zealand Retail Interior Awards. The project has also been short listed for the NZIA Local Branch Awards. This is exciting news for all of those involved in the project and great recognition of the close working relationship between Hunt Davies Tennent Limited and the Foodstuffs project team.



TARADALE LANEWAY AND CAFE

This exciting development is an excellent example of what can be achieved through co-operation between a TA and building developer. A narrow walkway between a major parking area and the main shopping street was identified as a major pedestrian link that needed much improvement. Partial demolition of the building adjoining the walkway permitted the creation of a generous laneway and new café that opened out onto this space. The building design, features a skeletal steel structure wrapped in frameless glass. Raised portions of the building at each end of the laneway act as beacons signaling this important node in the streetscape. Hunt Davies Tennent have also been engaged to complete the interior design and fit out phase of the café.

