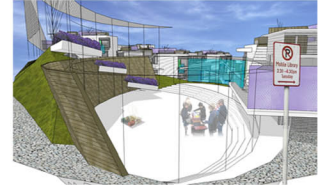
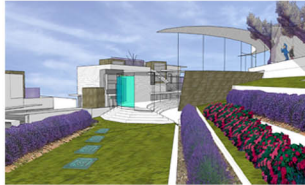




HDT HIGHLY COMMENDED IN STATE HOUSING COMPETITION

June and July saw HDT competing in Housing New Zealand's State Housing Design Competition. The competition aimed to stimulate debate on the future design of state homes: working with higher density communities and a changing demographic profile of HNZA tenants. We developed fresh design ideas for houses ranging from small one bedroom units to large seven bed villas for extended families. Our design centred around the concept of "Genius Loci" –or sense of place. The site is located in Auckland's volcanic domain between One Tree Hill and Mount Albert and key ideas included forming our own symbolic "volcano"- a civic space for the community to gather. Themes of custodianship, care and reflection were threaded through the scheme as we worked to give a special identity and sense of place to our proposal. 100 Architects from NZ and overseas entered the competition and we were delighted to receive a Highly Commended citation, placing HDT in a very select group of top entries. The judges comments were especially positive, basing their citation on "Imaginative Presentation: Creative Ideas: Complex and Sophisticated with a good use of Communal space." Entries will be on display at the VUW School of Architecture until 27th September.



PO Box 6435
24 Blair Street
Wellington
New Zealand
T 04 385 2621
F 04 385 2629
E architects@hdt.co.nz



HUNT . DAVIES . TENNENT Ltd
ARCHITECTS



KATE SHEPPARD GOLD AWARD HDT's Kate Sheppard Apartments, Thorndon, won the Gold Medal in the Commercial Award over \$5 million category in this year's Master Builders House of the Year awards



NETWORK AUGUST 2005



HUNT . DAVIES . TENNENT LTD



PAK 'N SAVE NAPIER is NZ's largest supermarket outside Auckland! This is no ordinary "big box", however. It is a building with strong architectural character and quality design that has significantly "raised the bar" in supermarket design. The architectural style uses simple cubic forms and enlivens the façade with light and interesting architectural elements. The fractured façade at high level breaks up the surface into an ordered rhythm of smaller planes, which defy the hundred metre length of facades. The soaring atrium rises above the paved boulevard linking the main entrance to Station Street, forming an important pedestrian link to the store.

The decorative style of the Art Deco period exhibits a playfulness and exuberance, which we have reflected in the introduction of 'askew piloti' (skewed columns) as a feature of the main entrance, horizontal banding (streamlining) of the entrance form and the introduction of a ziggurat in the glazed verandahs and parapet which produces a design that responds to the Art Deco heritage of Napier without slavish reproduction or tokenism..



GILLIES & MARK REAL ESTATE A compelling new presence on the streets of Upper Hutt is the refurbishment and extension of the existing headquarters of Gillies & Mark Real Estate.

The building states a clearly articulated form and the selection of external materials expresses and reflects the clients ethos of synergy and efficiency. The dominant metal cladding feature is offset by the floating roof permitting an influx of natural light to illuminate the interior of the first floor. These first floor offices are an exposition of a clear concept that provides a workspace offering a multitude of views to both the street-scape and the surrounding hills of Upper Hutt.

The vertical glass structure that mediates both between the inside and outside, and ground and first floors, succeeds via an integration of structure and glass to draw clients and building users from the reception area into the informal lounge and meeting spaces.



'FAT LADIES' MAKE WAY FOR 'HOPE BROS'. During Jan 2005 the Fat Ladies Arms on Dixon Street closed its doors, the life-sized stuffed cowboy and Indian were put into storage to live another day and in April 2005 Hope Bros threw open its fine new doors. We worked closely with our clients Jason and Simon to develop the new bar which would welcome everyone from All Black fans to serious music lovers to food epicurians and with the occasional Lions supporter tolerated too!

Conceptually the idea was a complete strip back of the space exposing the existing rough structural frame and brick walls. We then began to carefully insert new elements into the space concentrating on highlighting the existing double height space and first floor gallery. This has been a very successful approach allowing people to be part of the main bar action or to retreat upstairs to the mezzanine for a quieter chat without feeling too separate. We then introduced some snugs, special places which have an even more intimate character. When a match is on or a band is playing the gallery works as a balcony overlooking the event and the fans below.

