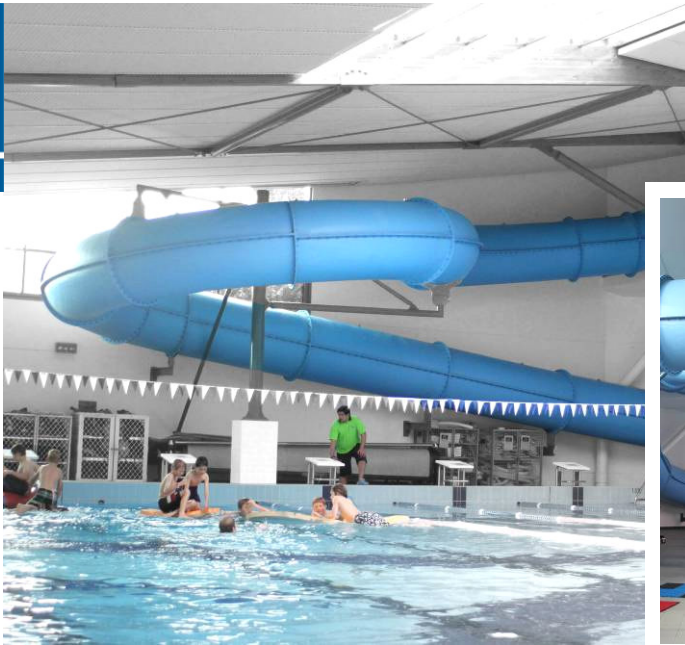


addition

ARCHITECTURE
HDT

karori pool hydroslide



karori pool hydroslide

Wellington City now has its very first hydroslide- the recently completed 30m long slide at Karori Swimming Pool. HDT designed a slide which could fit inside the existing swimming pool hall and over the top of the main lane pool. This made for challenging construction conditions as contractors had to assemble the slide while the pool remained open to the public. The slide is necessarily short in length, but is ultra fast and features space for a 'clip on' extra inflatable slide for use during the school holidays.

re-furb

ARCHITECTURE
HDT

levin NW



levin NW

The redevelopment of the existing New World supermarket in Levin has now commenced on site and includes the creation of a new entrance lobby and expanded Produce, Floral and Garden departments. The architectural language of the addition is evocative of the areas rural industry through the extensive use of raw, natural materials. Through the introduction of vibrant colour and differing materiality each department now has it's own unique feel.



commercial works

newsletter issue : October 2010

ARCHITECTURE
HDT

This month in our *October Newsletter* we are excited to share with you a selection of our commercial projects that are currently nearing completed documentation, under construction or are already being used and enjoyed by our clients and the public.

We would also like to take the time to welcome three new staff to the growing team at *Architecture HDT*. *Emma Buchanan* completed her BArch in 2009 at Victoria University in Wellington and joins our team of Architectural Graduates. Prior to joining HDT, Emma worked as a 3D modeller and renderer, helping to develop her interests in the use of media and computer technologies and their role in Architecture. *Nyree Trollope* also joins our team of Architectural Graduates. Since graduating from Victoria University in 2006, Nyree has gained professional experience in private residential projects. She finds satisfaction in working closely with both client and contractor, to watch projects develop from empty sites into successfully completed projects. *Tom Whiteman* registered in the UK in 2003 and emigrated to NZ in 2006. Tom joins HDT building on his commercial and residential experience. He enjoys the creative process of taking projects from inception through to completion, with efficiency and attention to detail. We welcome Nyree, Emma and Tom to their new positions in *Architecture HDT*.



Emma Buchanan



Nyree Trollope



Tom Whiteman

DIRECTORS

Mike Davies
Erin Tennent
Mark Bates
Geoff Glynan

ASSOCIATE

Todd Gilmore

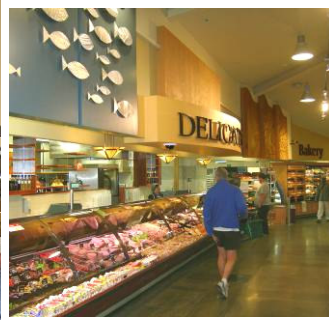
PO Box 6435
Wellington 6141
24 Blair Street
Wellington 6011

T 04 385 2621
F 04 385 2629
E info@hdt.co.nz
W www.hdt.co.nz



Architecture HDT.

re-urb
Architecture HDT



hutt city NW

HDT were very pleased to have been the Architects for the Hutt City New World refurbishment that completed late in 2009. The store has received a complete interior refresh including the introduction of new lighting, signage and decorative treatments. Feature canopies and bulkhead treatments with selective use of rich materials and colour have been added to differentiate departments. The final result is a rich interior full of life and interest that enhances the customer shopping experience and is a testament to the strong working relationships between client, Architect and Contractor.

hutt city NW

new build
Architecture HDT



dargaville pool

The Kaipara District has a new pool! Dargaville Pool was completed in early 2010 and meets the needs of the community for a high calibre facility for recreational swimming, competitive swimming training & events, school swimming groups, learn-to-swim classes, coaching & sporting events such as kayaking & water polo. A spray park & rehabilitation pool coupled with strong formal planning links help to ensure that this facility caters for a wide range of users with varying abilities. HDT are proud to have been engaged as Architects and lead consultants for this new pool facility by Kaipara District Council in association with the Kauri Coast Community Pool Trust.

dargaville pool