

new
build

ARCHITECTURE
HDT

collure house



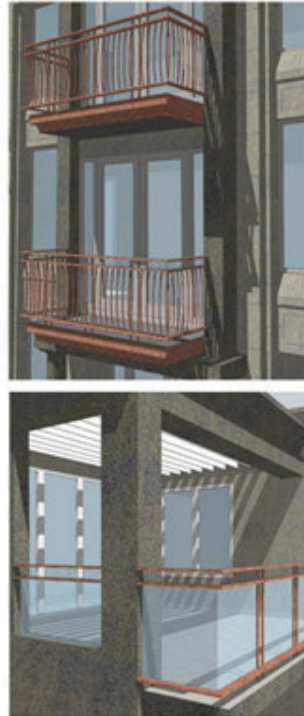
collure house

Collure House is a high quality residential project located in the exclusive new Seatoun "Waterfront" development with views north and west out to Wellington Harbour. Wrapping cedar "shells" form the north and south wings which contain living spaces upstairs. A glazed 2-storey atrium encompasses a cantilevered timber stair and acts as a natural heat trap. Solid cedar louvre blades line the west side of the atrium controlling sunlight and providing privacy. Collure House is a unique addition to a developing and distinctive, coastal area of Wellington.

new
build

ARCHITECTURE
HDT

oriental bay house



oriental bay house

This high quality residential development contributes positively to the stretch of eclectic streetscape along Oriental Parade. The building's architectural language draws on classical forms while exploiting modern construction practices and materials. The façade is divided into two parts articulating the internal spatial organisation. The primary volume is ordered around projecting balconies while an adjacent volume is recessed back from the street to provide outdoor terraces at each level and basement parking access. A molded stone cornice links these two volumes. The use of granite offers a sense of solidity, permanence and durability in a marine environment and animates the façade by providing depth, relief, light and shadow.



residential works

newsletter issue : june 2010

ARCHITECTURE

HDT

We proudly announce our new company branding for 'Architecture HDT Ltd.' reflecting a new structure and team of Directors. This initiative enables a continuation of a high standard of architect services by providing our clients with long term continuity of key personnel. Specifically, we welcome Mark Bates and Geoff Glynan to their new positions as Directors alongside Mike Davies and Erin Tennent. The new roles recognise the skills and abilities that Mark and Geoff each bring to project works. Mark has experience in a broad portfolio of work with emphasis on delivering large scale aquatic facility projects, houses and multi-unit residential projects. He is well known to many of HDT's clients particularly council organisations. Similarly, Geoff is also well known to HDT's clients and has a particular focus on the delivery of large mixed use commercial projects and in the management of complex project organisational structures associated with these. You may also have noticed two new faces in the HDT team. Adam Parkes has worked with us on retail and housing projects since early 2009 having gained 4 years professional experience working on a variety of project types including large and medium scale residential and commercial architecture and master-planning. Bridget Lissaman has worked on a wide variety of projects in Wellington and London prior to also joining our team. Her interests lie in environmentally and socially responsible design. We welcome our staff to their new roles within the Architecture HDT team. In addition, we are pleased to present our June Newsletter which comprises a small taste of the residential works that are currently being carried out by our practice. Many of our commercial clients are not aware of the diversity of residential projects we undertake. These vary in scope, type and scale, from 'new builds' to sensitive 'additions'. We are excited to bring to you a rich overview of a few of our selected residential works.



DIRECTORS
Mike Davies
Erin Tennent
Mark Bates
Geoff Glynan

ASSOCIATE
Todd Gilmore

PO Box 6435
Wellington 6141
24 Blair Street
Wellington 6011

T 04 385 2621
F 04 385 2629
E info@hdt.co.nz
W www.hdt.co.nz



seatoun house

This new house in Seatoun responds directly to its gently sloping site with a living wing extending onto both a north-facing terrace with tiered lawns and harbour views, as well as a sheltered southern courtyard. A sleeping wing exploits passive heating from the setting western sun. The wings are linked by a double height entrance foyer with extensive glazing that contains a 'feature' stair and walls of timber and glass. Innovative lighting design and honed masonry block, zinc panels and painted sheet claddings combine to create a residence of robust construction with a distinct aesthetic well suited to its locale.



paekakariki hill

This new addition to an existing modest timber framed 'log cabin' seeks to establish a connection with the distinct beauty and experience of the Pakakariki Hill landscape. The new addition addresses the complexity of the landscape by turning the overall structure in on itself, focusing on a sheltered, intensely landscaped courtyard. In this way, a stronger relationship with the landscape is established through an introspective nature. The client's heritage has helped to shape the overall form which pays homage to characteristics of traditional Australian homestead architecture. Large metal roofs and deep verandahs are coupled with light filled interior spaces and combine to create a unique sense of place.

"...simplicity... timelessness... tranquility... traditional... a homestead in which the different facets of your life: family, art, garden, relaxation, retreat... are nourished... a place that the children, and grandchildren keep returning to... traditional architectural forms and references are important to create the sense of place that you seek..." Project Brief